



# PTE0211

Point of Sale System i5

# Table of Contents

<b>Safety Precautions.....</b>	<b>2</b>
<b>Initial Installation.....</b>	<b>3</b>
<b>Touch POS Appearance .....</b>	<b>4</b>
<b>PTE0110 POS .....</b>	<b>4</b>
<b>Product Description.....</b>	<b>5</b>
1. 15-inch LED display parameter .....	5
2. 15-inch touch screen parameter.....	6
3. Motherboard parameter.....	6
4. Main board & I/O Port .....	8
5. Dual screen settings .....	10
<b>Appendix: Names of toxic and harmful substances or elements and their contents .....</b>	<b>13</b>

## Safety Precautions

1. Select a flat and vibration-free table to place the terminal.
2. The location of the terminal should be chosen to avoid direct sunlight, and exposure to water and dust.
3. Please keep terminal away from strong electromagnetic fields.
4. To prevent fire or electric shock, please avoid blocking or covering air vents from terminal.
5. In areas of poor power quality or storage, this terminal should be equipped with a separate power supply to power it.
6. The product uses a standard wall outlet with earthling poles and cannot be arbitrarily changed. Confirm if the voltage nameplates of the drives match.
7. Make sure the ground prong of the power plug is in a power outlet or power strip grounding jack, and make sure that the grounding jack is thoroughly grounded. If poorly grounded or ungrounded, the result will be either an electric shock, a fire, or damage to the equipment.
8. The terminal is best to not start with other high-power appliances that frequently share the same socket outlet. The terminal should be located away from the cash register, in a close accessible way to swap.
9. This equipment should be connected to a variety of cables in case of power failure to ensure that the conduct takes the screws tighten well to be able to plug or unplug the cables.
10. Clean the terminal, please do not use a wet rag to wipe the body or chemicals such as: gasoline, thinners, etc.
11. When the terminal fails, immediately cut off power. Do not attempt to open or repair terminal, as well as to not let it be promptly used by others.

**WARNING:** For the non-compliance with the above issues, as well as non-qualified service personnel or the use of non-designated by the Company to provide and repair parts for maintenance of all the consequences, the Company does not assume any responsibility.

## Initial Installation

### 1. Unpacking

Immediately after unboxing the terminal, please verify if all products are none damaged. If product contains damaged hardware, please make sure to report the issue to the shipping company. Once reported the shipping company will immediately report the claim to the manufacturer. After unpacking, check if spare parts are complete.

### 2. Preparing for Installation

Examine the case for cleanliness, signs, marking, and if labeling is correct. Check the working environment because the cash register is a precision instrument and should be checked before using the surrounding environment so that it meets the technical specifications of the cash register. If inconsistent with the specifications, please do not use the cash registers.

### 3. The main technical specifications

Power supply voltage: 220VAC $\sim \pm 15\%$

Power: 80W  $\pm 15\%$

Frequency: 50—60Hz

Temperature Operating: 0 °C ~ 40 °C

Storage: -20 °C ~ +55 °C

Relative humidity: 20% ~ 93% (40 °C)

### 4. Preparing for use

- When placing the machine, please make note of the cable line to ensure that the wires are fluent.
- Open the machine host power switch (note: we must ensure that there is a good power supply ground).
- System installation (cash registers at the factory with only the DOS operating system and customers using a genuine Windows operating system before installation).
- To perform some general sales operations, check monitors, printers, cash drawers and other peripherals to ensure that they're working properly.

## Touch POS Appearance



### PTE0110 POS

1. 15-inch main display (resistance touch display)
2. Power button
3. 9.7-inch custom display
4. MSR

## Product Description

### 1. 15-inch LED display parameter

Item	Specification	Unit
Screen Diagonal	15.0	Inch
Active Area	304.128(H)×228.096(V)	mm
Pixel Pitch	0.099(H)×0.297(V)	mm
Resolution	1024(H)×768(V)	-
Pixel Arrangement	R.G.B. Vertical stripe	-
Display Mode	Normally Black	-
LED life	50000	Hour
White Luminance	350(Typ)	Nit
Contrast Ratio	1000:1(Typ)/700:1(Min)	-
Response Time	30	ms
Operating Voltage	3.3V	V
Surface Treatment	Hard-Coating(3H)	-
Outline Dimension	326.5(H)×253.5(V)×9.7(D)Typ.	Mm
Input signal	LVDS	-
Support Color	16.7M	-

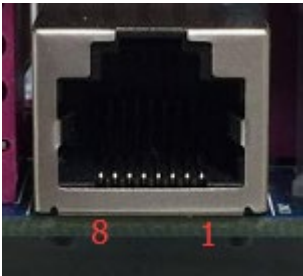
Items	Symbol	Min.	Max.	Unit	Conditions
Supply Voltage	VDD	-0.5	5	V	-
Operating Temperature	TOP	-20	70	°C	Note

## 2. 15-inch touch screen parameter

Size	326mm x 252mm
Visual Area	304mm x 228mm (4: 3)
Resolution	1024 x 768
Refresh rate	60Hz
Dot pitch	0.297mm x 0.297mm
Resolution	4096 x 4096
color	16M
Response time	16ms

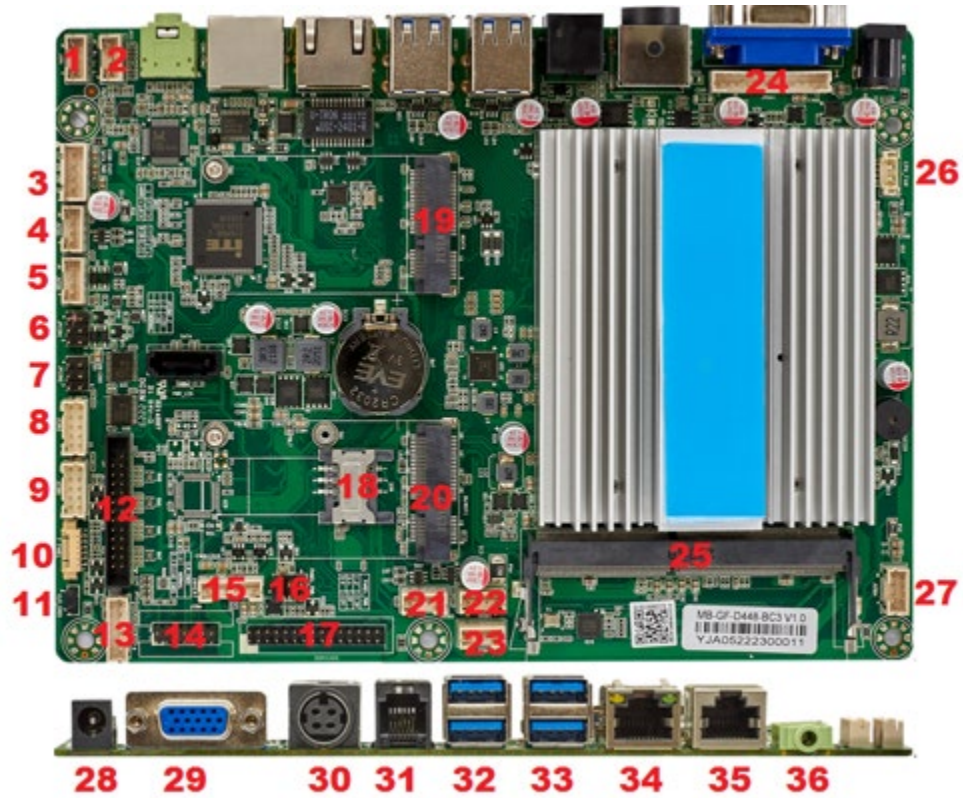
## 3. Motherboard parameter

Item		Specification
PCB	Form Factor	Special
	Dimensions	190*140mm
	Layer	4 Layers
	Color	Green
Processor	Processor	GeminiLake Refresh Celeron J4125 2.0GHz-2.7GHz/10W
	Socket	FCBGA1090
	TDP	10W
	Heat dissipation	No FAN
Chips	PCH	N/A
	CPU_PWM	RT5077AGQW
	Super I/O	IT8786E-I/EX
	LVDS	7511B
	COM	75232
	LAN	RTL8111H
	Audio	ALC897-VA2, NS4251, 3W4Ω
Memory	SlotType	260Pin DDR4 SO-DIMM
	Slot Number	1
	Memory Type	DDR4 2400MHz
	Max Memory	8GB

	Channels	Single																		
Graphics	Controller	Intel® HD Graphics																		
LAN	Connector	1*RJ45																		
	PXE/RPL Boot Rom	YES																		
	Wake Up On LAN	YES																		
USB	USB2.0	6																		
	USB3.0	4																		
Other	BUZZER	1																		
	CMOS Battery	1																		
COM1/COM2		<table border="1"> <thead> <tr> <th>Pin</th> <th>Signal</th> </tr> </thead> <tbody> <tr> <td>1</td> <td>GND</td> </tr> <tr> <td>2</td> <td>RX</td> </tr> <tr> <td>3</td> <td>TX</td> </tr> <tr> <td>4</td> <td>RI</td> </tr> <tr> <td>5</td> <td>GND</td> </tr> <tr> <td>6</td> <td>RX</td> </tr> <tr> <td>7</td> <td>TX</td> </tr> <tr> <td>8</td> <td>RI</td> </tr> </tbody> </table>	Pin	Signal	1	GND	2	RX	3	TX	4	RI	5	GND	6	RX	7	TX	8	RI
Pin	Signal																			
1	GND																			
2	RX																			
3	TX																			
4	RI																			
5	GND																			
6	RX																			
7	TX																			
8	RI																			



4. Main board & I/O Port

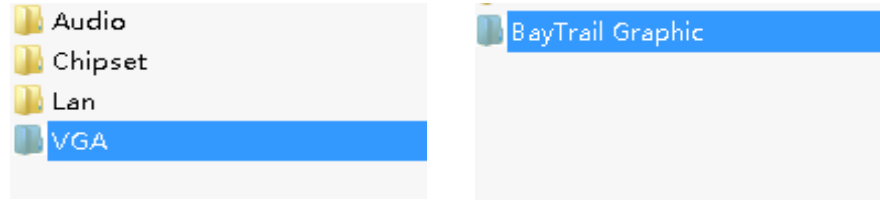


NUM	LABEL	COMPONENTS
1	JSPK	Speaker
2	JMIC	MIC
3	SATA-PWR	4 pin Hard disk power-supply port
4	USB	USB 2.0 port
5	USB	USB 2.0 port
6	JPCOM1	COM1 port with power choice pin
7	JPCOM2	COM2 port with power choice pin
8	JCOM3	COM3 port
9	JCOM4	COM4 port
10	F-PANEL	Turn on/off, Hard disk indicator light

11	CLR_COMS	Clean COMS setting
12	JLPT	LPT port
13	JPS/2	PS/2 keyboard and mouse
14	JTPM	Connect to TPM2.0 model
15	INVTER	Display backlight port
16	PANEL_PWR	Setting display supply voltage
17	LVDS	Connect LVDS display
18	SIM	SMI card slot
19	MINI SATA	Mini hard disk port
20	MINI PCI-E	Connect to WIFI or 4G model
21	USB	USB 2.0 port
22	USB	USB 2.0 port
23	USB	USB 2.0 port
24	VGA	VGA port(inside)
25	SO-DIMM	Memory port
26	CPU-FAN	CPU fans port
27	USB	USB 2.0 port
28	DC OUT	12V power output
29	VGA	VGA port
30	DC IN	12V power input
31	RJ12	Cash drawer port (Support OPOS)
32	USB	USB 3.0 port
33	USB	USB 3.0 port
34	LAN	Network port
35	RJ45(COM)	COM1/COM2 port
36	AUDIO-OUT	Audio input

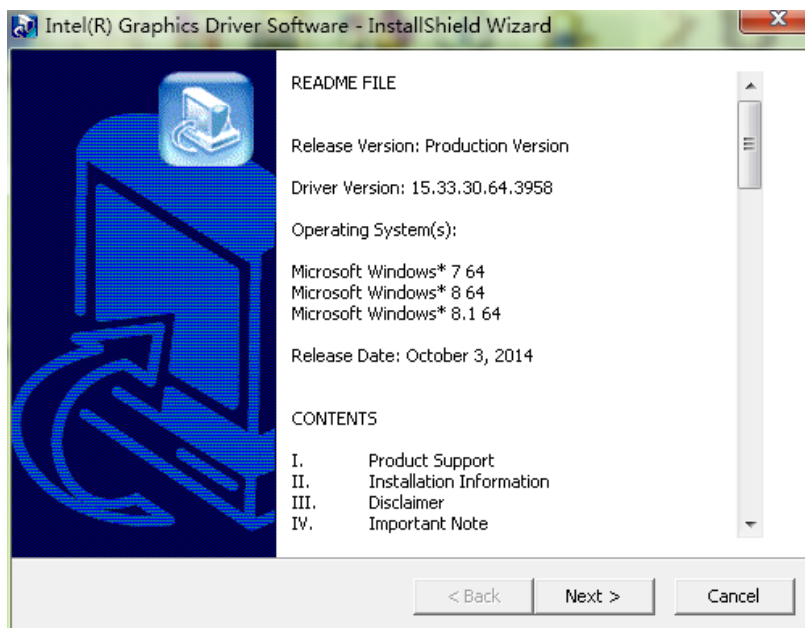
## 5. Dual screen settings

- a. Open the folder in turn, install VGA driver. Then reboot the computer.

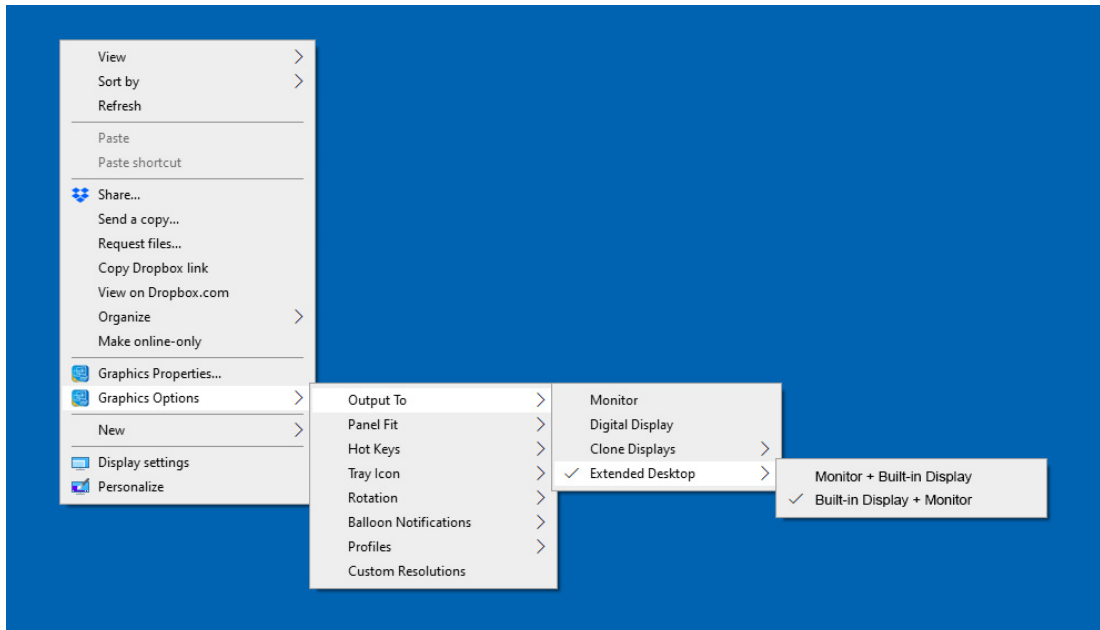
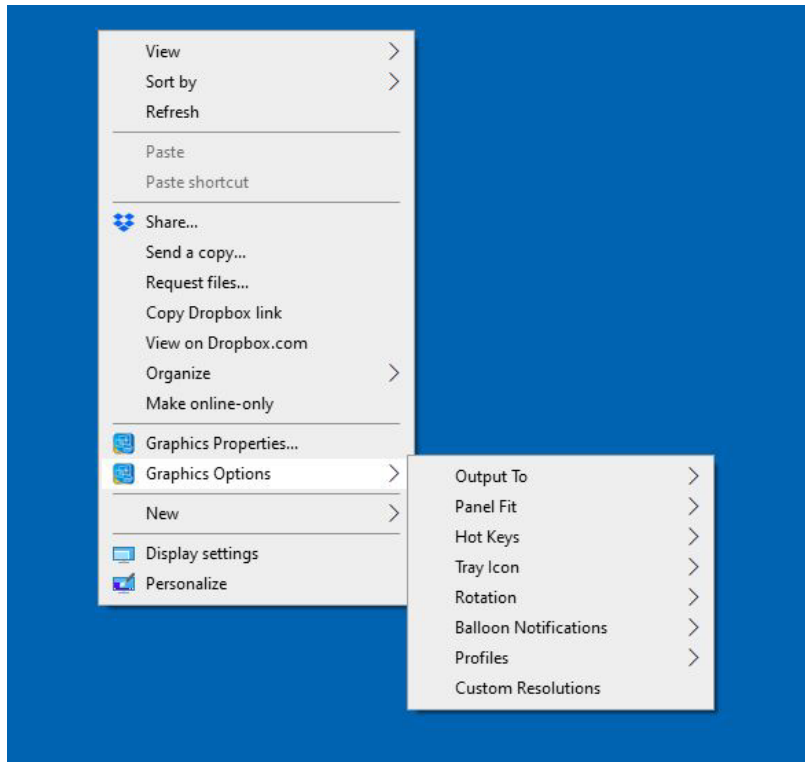


win732_J1900	
Framework.rar	51,620,828
win7win864_J1900_153330.exe	129,217,064
win832_J1900_153330.exe	72,052,192

DisplayAudio	2016/6/22 9:36
Graphics	2016/6/22 9:36
ICCS	2016/6/22 9:36
Lang	2016/6/22 9:36
autorun.inf	2014/2/20 4:12
DIFxAPI.dll	2006/11/2 23:21
mup.xml	2014/2/20 4:13
readme.txt	2014/3/6 10:41
<input checked="" type="checkbox"/> Setup.exe	2014/2/20 4:14
Setup.if2	2014/2/20 4:12
UsersGuide.pdf	2014/3/6 10:41



- b. In the Desktop, click the right mouse button. In turn, select “Graphics Options” → “Output To” → “Extended Desktop” → “Built-in Display + Monitor”.





**Warm Tips:**

3nStar does not provide any data restoration and the backup service. 3nStar is not responsible for damage or loss of data, programs, or storage media. Please make sure you are in time to backup any information or programs that you consider valuable. Thank you for your cooperation!

## Appendix: Names of toxic and harmful substances or elements and their contents

Part	Hazardous substance					
	Pb	Hg	Cd	Cr(VI)	PBB	PBDE
External device	x	x	o	o	o	o
Cable part	x	o	o	o	o	o
Switching power supply	x	x	o	o	o	o
Mainboard and PCBA	x	o	o	o	o	o
Memory	x	o	o	o	o	o
HDD/SSD	x	o	o	o	o	o
FAN	x	x	o	o	o	o
Plastic part	o	o	o	o	o	o
Aluminum alloy	x	o	o	x	o	o

o: The content of toxic and harmful substances in all homogeneous materials in the parts are specified in the SJ/T113632006 limited the following requirements.

x: The content of toxic and harmful substances in at least one of the homogeneous materials beyond the limitation of SJ/T11363 - 2006 provisions; on the table in the "X" components, due to technical reasons at present cannot achieve the replacement, follow-up will gradually improve.

Note: the peripheral component contains the keyboard, display, printer, cash drawer, adapter, customer display, laser gun or scanner.

ONE  
BRAND  
ONE  
SOLUTION

