



PTE0605

Table of Contents

Introduction	3
Product Overview	3
POS Section	4
Views	4
Internal Quick View	5
Chassis Details	5
Main Screen Details.....	6
Definitions	6
Motherboard	7
Cables	8
PTE0605 - J6412 I/O Ports	9
Take Apart	10
Before You Start	10
Tools to prepare	10
Preparation.....	10
Motherboard	11
Customer Display.....	15
Memory Card.....	18
Hard Drive.....	19
LCD.....	20
Touch Control Board	21
MSR.....	22
User Notice.....	23

Introduction

Product Overview

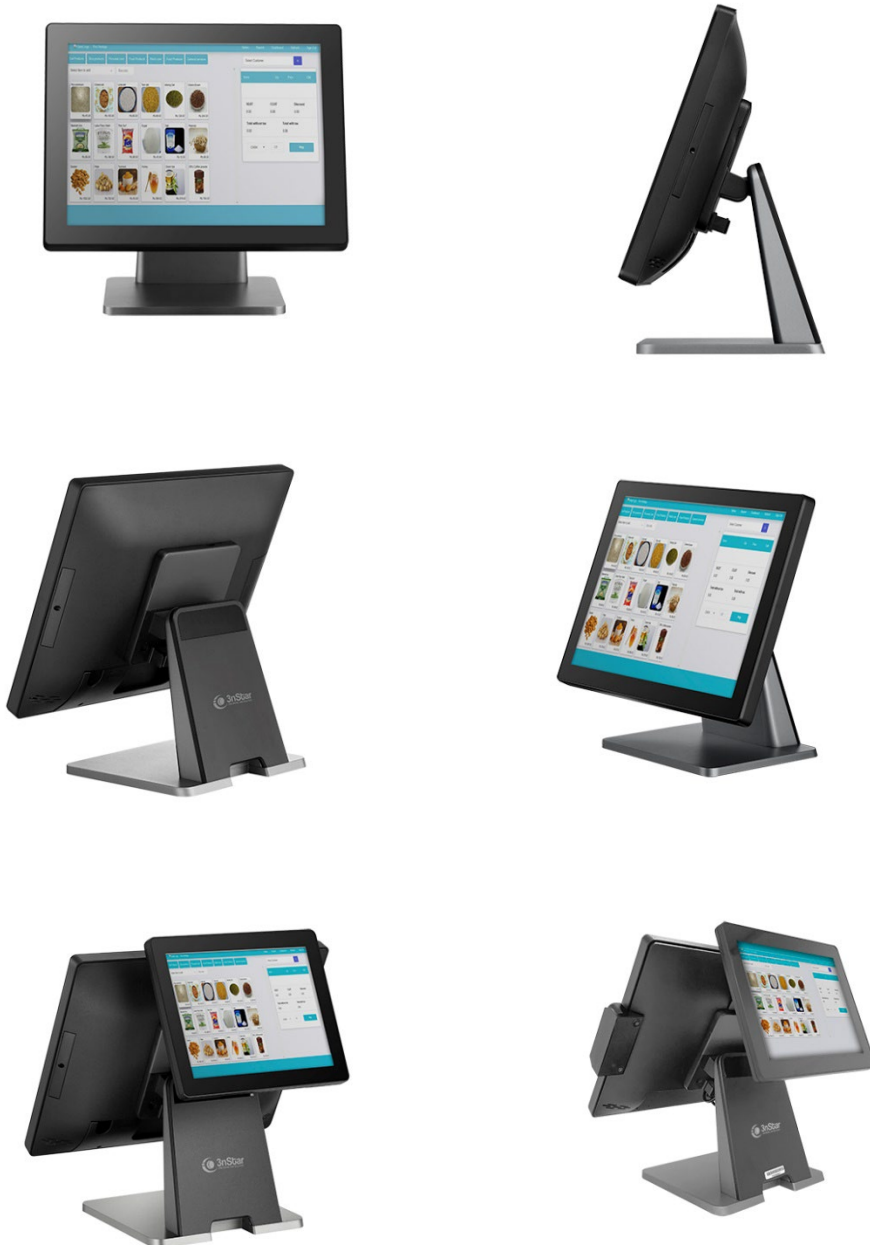


Picture-01

1. 15-inch TFT-LCD
2. The host indicator (Blue - system on, green - standby)
3. Base
4. Customer Display
5. Three track MSR with Dallas Lock
6. Three track MSR

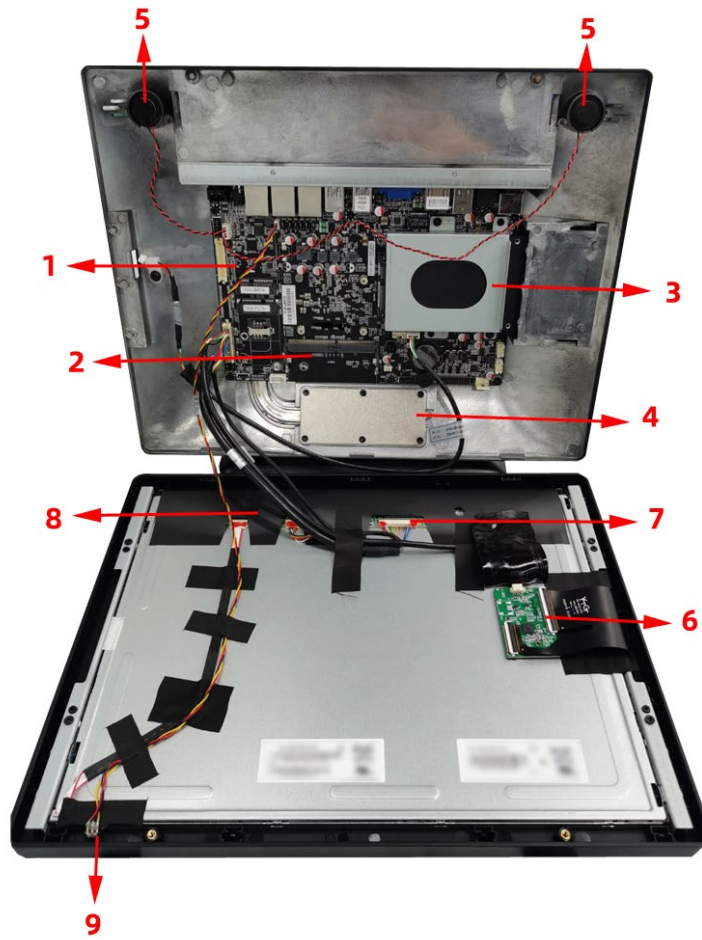
POS Section

Views



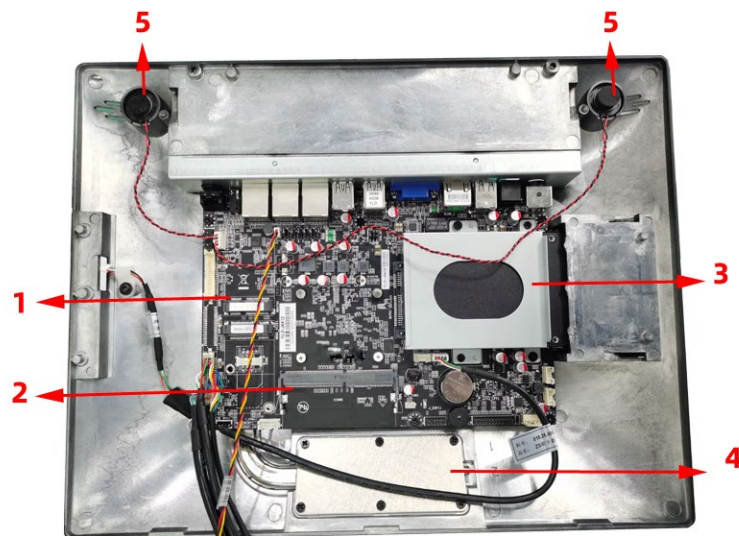
Picture-02

Internal Quick View



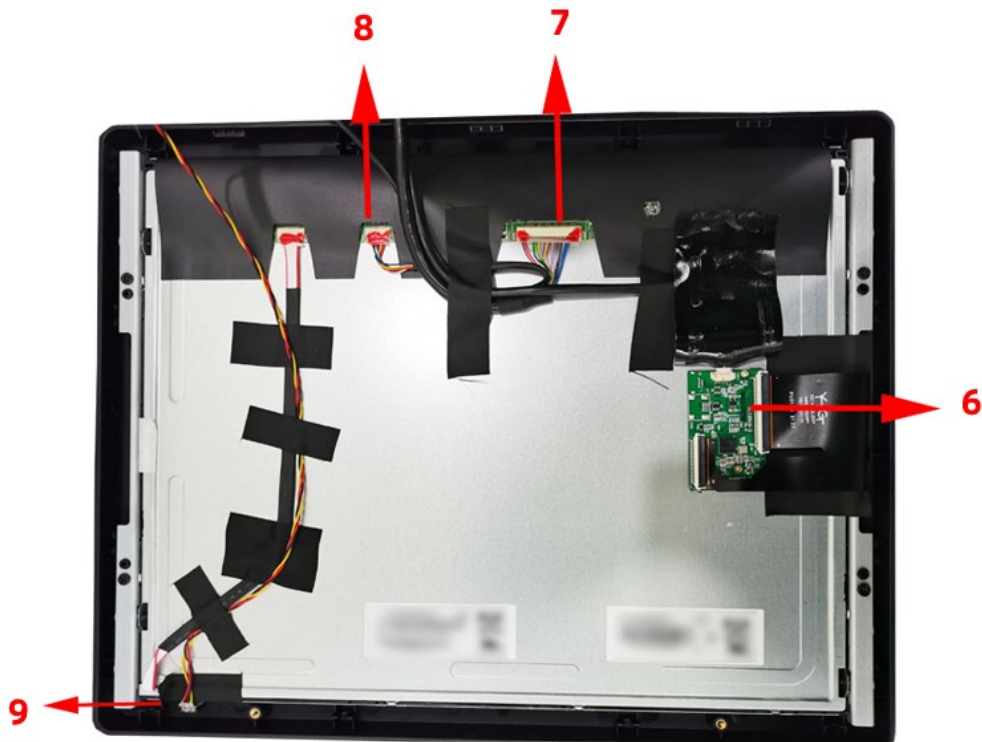
Picture-03

Chassis Details



Picture-04

Main Screen Details



Picture-05

Definitions

No.	Item	Quantity
1	Motherboard	1
2	Memory Slot	1
3	2.5" SATA SSD Slot	1
4	Cooling System	1
5	Speaker	2
6	Touch Control Board	1
7	LVDS Riser Card	1
8	Backlight Inverter	1
9	Host Indicator	1

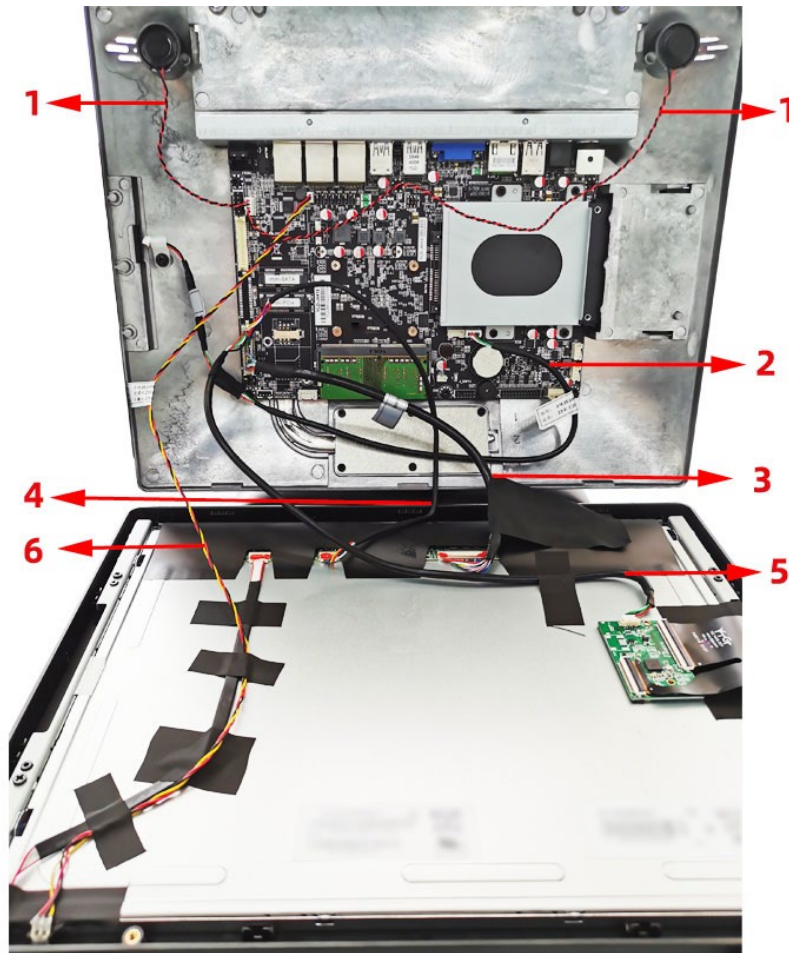
Motherboard



Picture-06

No	Item	Quantity
1	Host Indicator Port (Foolproof)	1
2	Speaker Port (Foolproof)	1
3	Mini-PCIe Slot (Wi-Fi Module)	1
4	LVDS, Backlight & Touch Combo Port (Foolproof)	1
5	Memory Card (DDR4) Slot	1
6	2.5" Hard Drive Slot	1
7	USB Port for Optional Module (Foolproof)	1

Cables



Picture-07

No.	Item	Quantity
1	Speaker Cable (2 in 1)	1
2	USB Cable (available when connected to MSR)	1
3	LVDS Cable (3 in 1 Combo Cable)	1
4	Backlight Cable (3 in 1 Combo Cable)	1
5	Touch Cable (3 in 1 Combo Cable)	1
6	Host Indicator Cable	1

PTE0605 - J6412 I/O Ports



Picture-08

Item	Remark	Quantity
Power Switch		1
Audio Combo	Mic-In/Speaker-out (Combo Jack)	1
COM (RJ50)	COM1~3: 0/5/12V by pin-JP	3
USB 3.0	Not powered during standby	4
BIOS Reset Button		1
VGA	Power enabled by BIOS; +12V	1
LAN	10/100/1000 Mbps	1
USB 2.0	Powered during standby	2
Cash Drawer Port	RJ11, 12V, Drive by Command	1
DC-IN	4-pin, support lock-type DC-IN Power Connector	1

Take Apart

Before You Start

1. Read these instructions completely before you start.
2. Strictly follow all instructions.
3. Pay attention to all warnings.

Tools to prepare

- 1 Screwdriver

Preparation

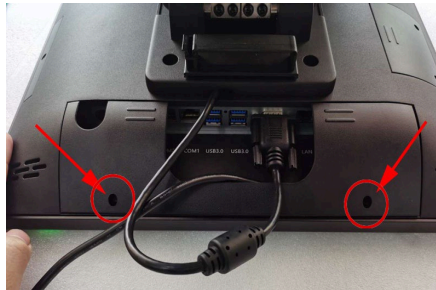
- To protect POS Chassis and display, please carefully place the POS terminal on a flat and clean surface.
- Prepare additional cushioned material (for example: soft, clean, and flat pearl cotton).
- Terminate the application running in the POS Terminal and shut down the operation system.
- Turn off the power of peripherals (for example: Thermal Receipt Printer).
- Disconnect peripherals.
- Disconnect the power adaptor from the POS terminal.

Warning:

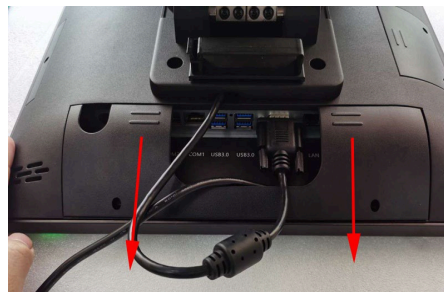
- **DO NOT retrofit any parts of POS Terminals or use non-qualified parts or components.**
- **Keep the disassembled parts, cables, devices, and screws in good condition.**
- **For maintenance or replacement, please consult the technicians of your supplier before you start.**

Motherboard

1. Unscrew and open the I/O panel cover on chassis.



Picture-09

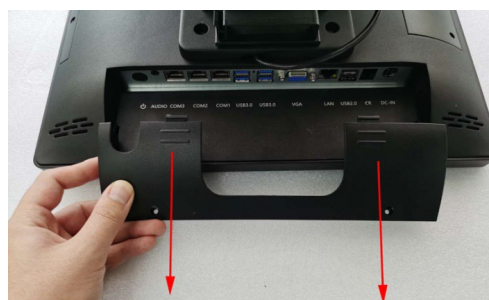


Picture-10

2. Disconnect all cables from the I/O Ports Panel.

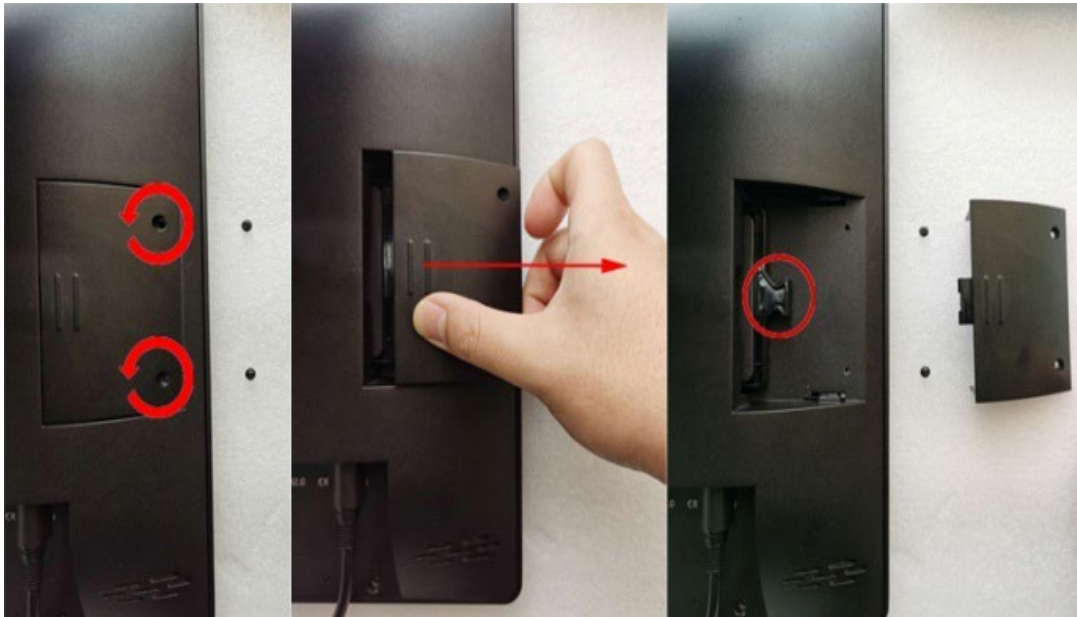


Picture-11



Picture-12

3. Take out the 2.5" Hard Drive from the Hard Drive Slot.



Picture-28



Picture-29

4. Use a HEX screwdriver to remove the hex spacers of the VGA Port and then unscrew the chassis and open it.



Picture-13

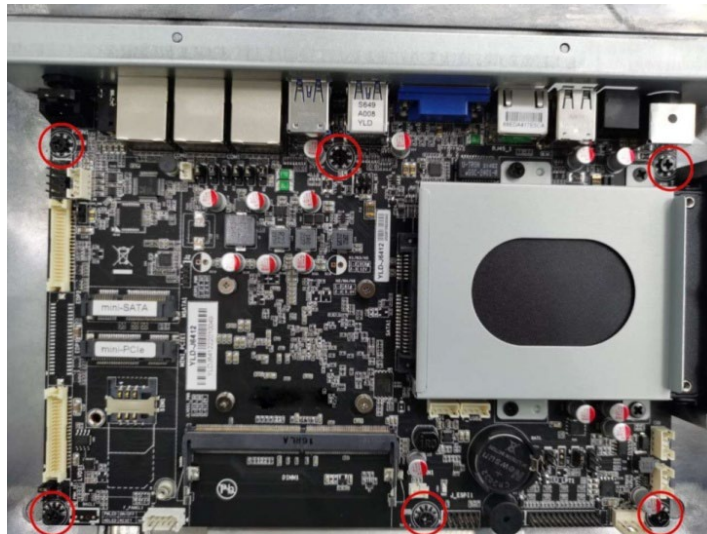


Picture-14



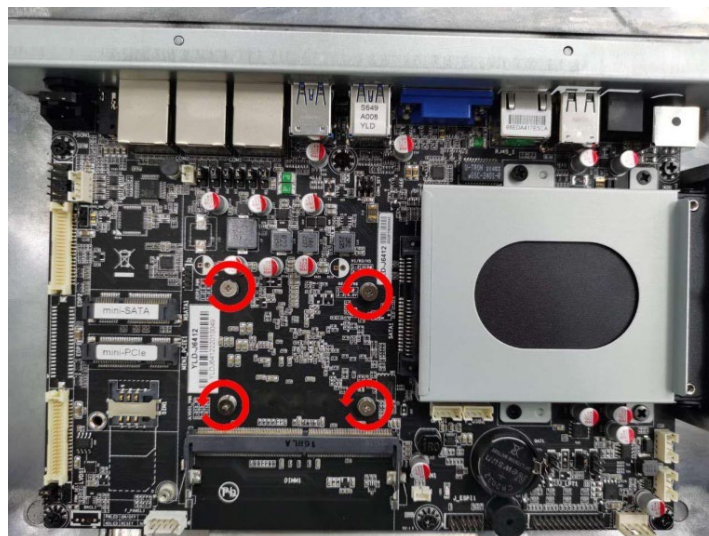
Picture-15

5. To replace the motherboard, please disconnect all cables from ports on the motherboard and unscrew six screws on the motherboard edge.



Picture-17

6. Since the CPU on the backside of the motherboard connects to the cooling system through silicone, be careful when you unscrew the four screws in the CPU area (You must use a screwdriver by hand rather than an electric screwdriver!).



Picture-17

7. Take out the I/O Port Panel from the motherboard and then replace the motherboard.

Customer Display

1. Unplug the VGA from the I/O Ports Panel.



Picture-18



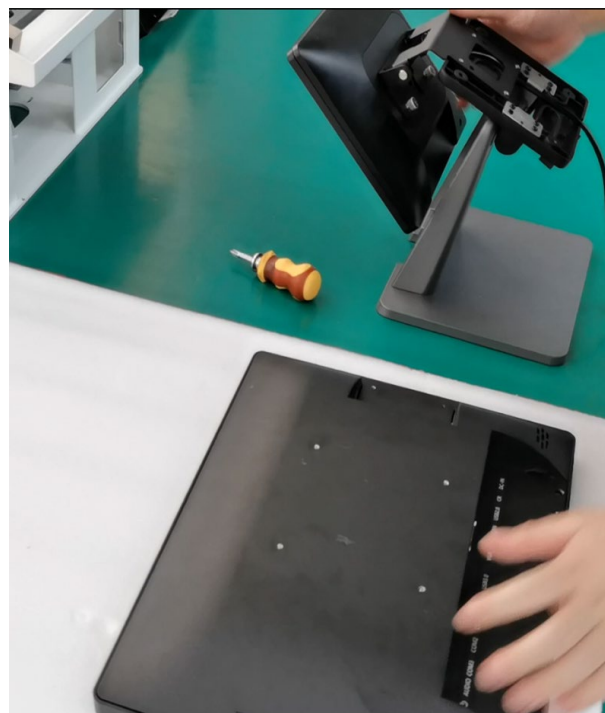
Picture-19

2. Remove the cover on the rear case, adjust the base to be vertical to the Chassis, and unscrew the four screws at the joint.



Picture-20

3. Detach the base with the secondary screen from the Chassis.



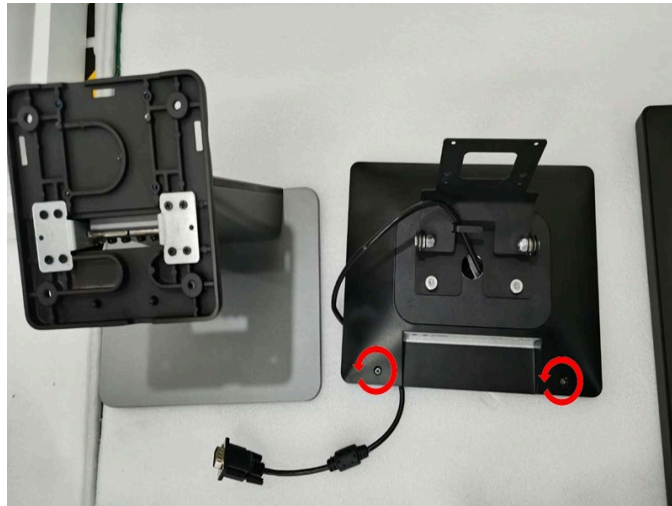
Picture-21

4. Unscrew four screws and separate the base and the customer display screen.



Picture-22

5. Remove the two screws on the back of the customer monitor and open the rear case.

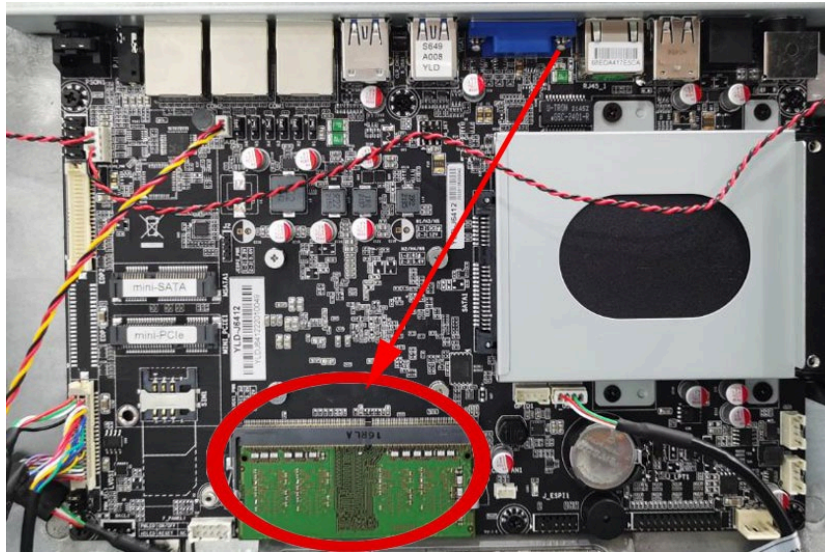


Picture-23

6. You will see the board and the cable in customer display.
(Please maintain it under the guidance of the technicians of your supplier because usually, users only need to detach the customer display from the POS and send it to your supplier. The supplier will conduct further repairs instead of the user.)

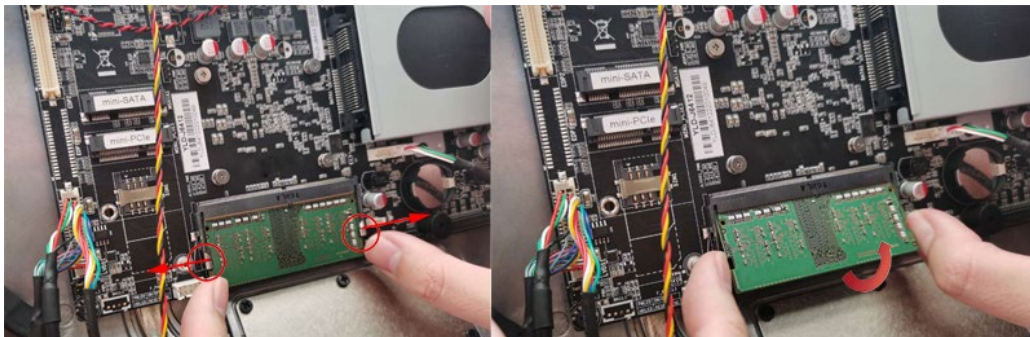
Memory Card

1. Find the memory card slot on the motherboard.

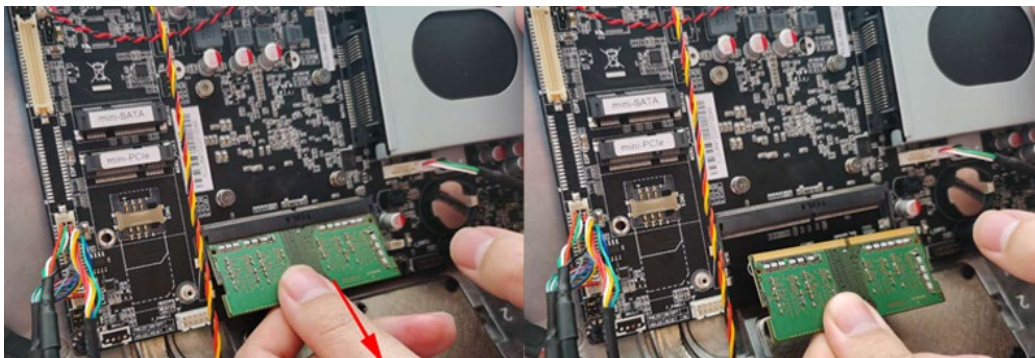


Picture-24

2. Pull out the buckles on both sides with your fingers and take out the ejected memory card.



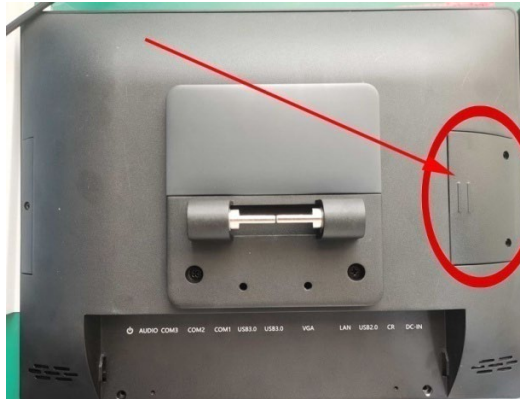
Picture-25



Picture-26

Hard Drive

1. Find the hard drive slot on the right side of back chassis.



Picture-27

2. Unscrew two screws on the cover and open it.



Picture-28

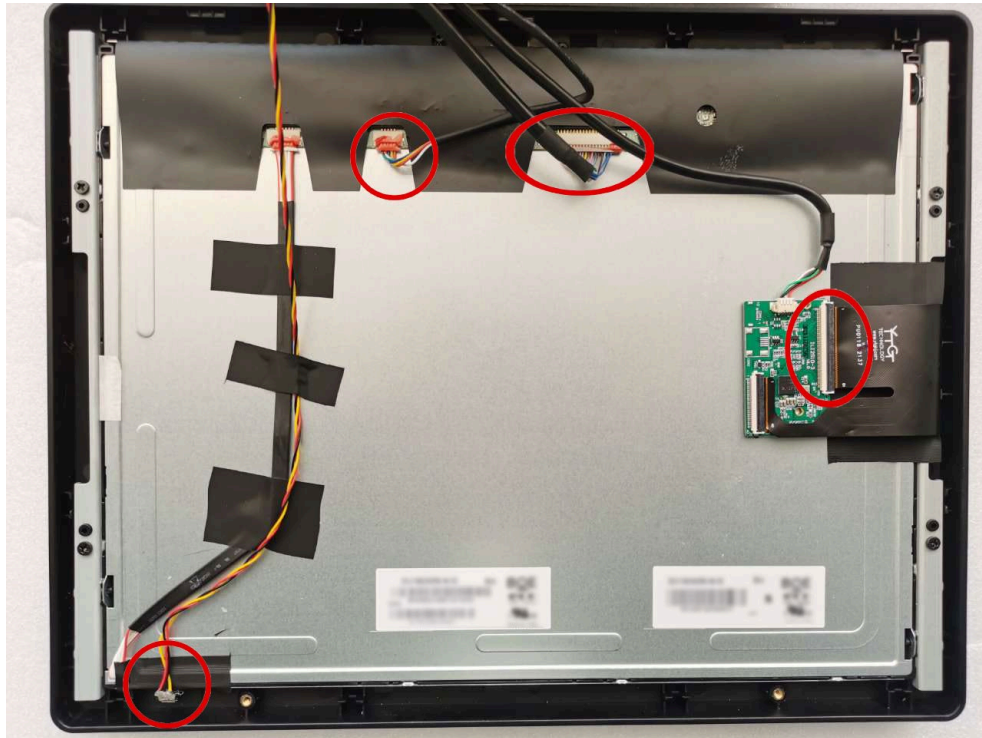
3. Draw out the 2.5" hard drive from slot.



Picture-29

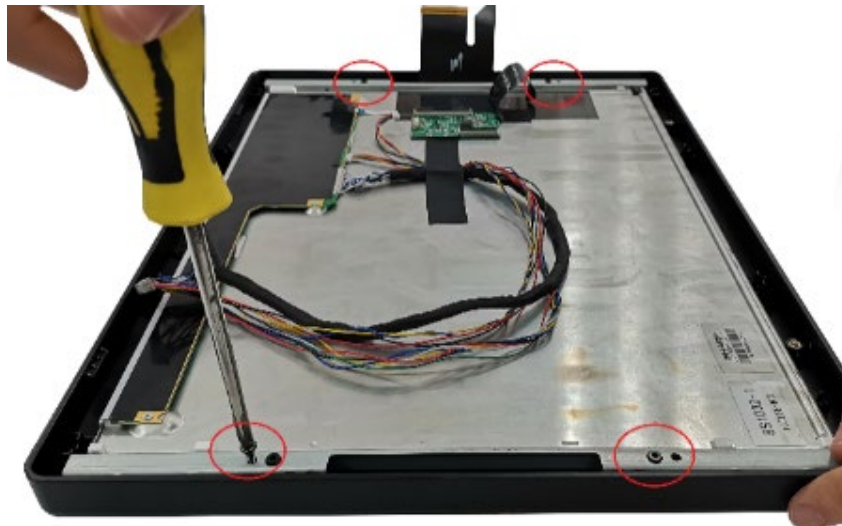
LCD

1. Open chassis as the previous guide and disconnect all ports on screen.



Picture-30

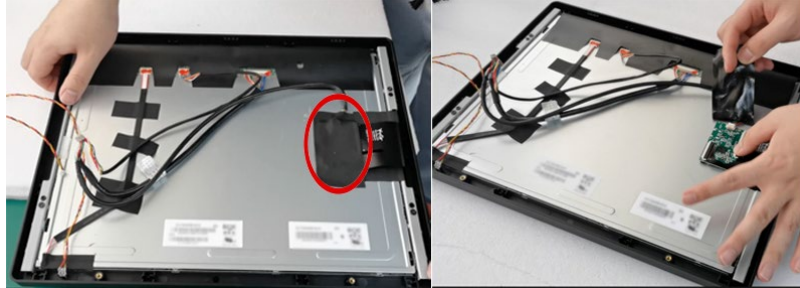
2. Unscrew four screws on screen mount and take out the screen from the frame.



Picture-31

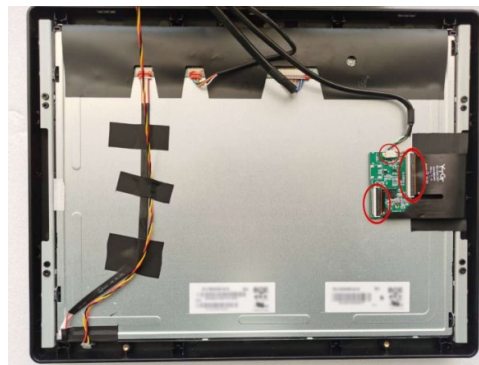
Touch Control Board

1. Open chassis as the previous guide and uncover the tape on the touch control board.



Picture-32

2. Disconnect the three ports on the touch control board and replace them (Please carefully disconnect the sponge pad at the bottom of the control card with a knife before taking it out).



Picture-33

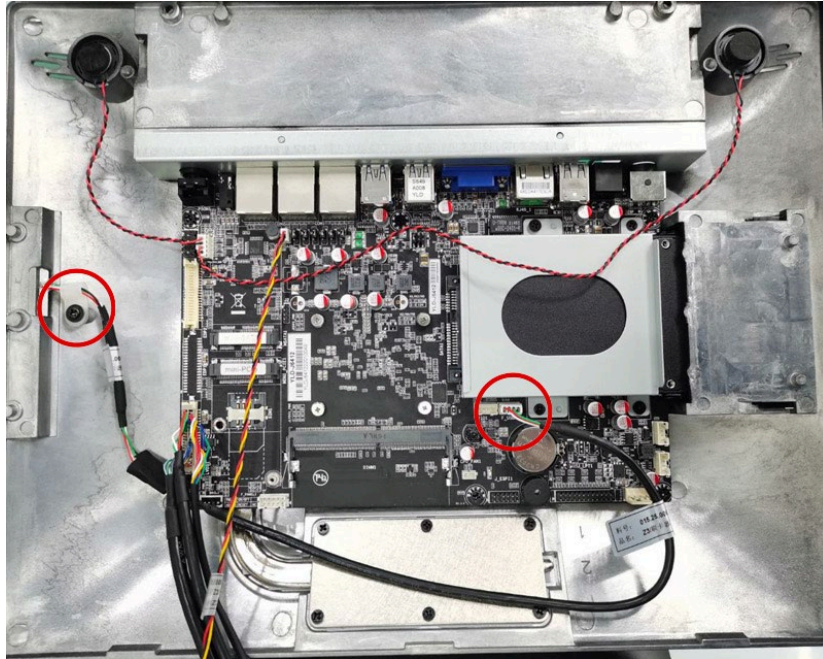
(Disconnect the ports in the directions indicated in the photo)



Picture-34

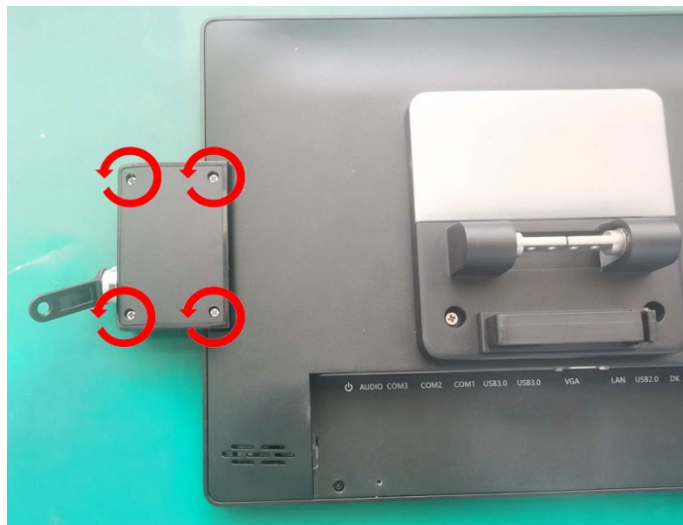
MSR

1. Open chassis as the previous guide and unscrew the screw on the cable clip near the left side and disconnect the MSR USB cable from the motherboard.



Picture-35

2. Restore the chassis and unscrew screws on the backside of the MSR and then detach the MSR from the POS terminal.



Picture-36

User Notice

1. When you are using the machine, choose a location that avoids direct sunlight, has little temperature change, has few water sources and extraordinarily little dust.
2. Please keep the machine away from strong electromagnetic fields.
3. Please pay attention to use the same power supply voltage as the one marked on the machine nameplate, otherwise the machine will be seriously damaged or unable to work. Do not share the socket with other high-power appliances that are frequently activated, such as refrigerators, air conditioners, and heating equipment. The power receptacle should be set close to the machine so that you can cut the power off quickly in an emergency.
4. When cleaning the surface of the machine, please do not use wet cleaning tools or chemicals to wipe the body such as gasoline and thinner.
5. When the machine is down, it should immediately cut off the power and stop using it. Do not disassemble and repair it without permission and contact your supplier in time.

Note: 3nStar is not responsible for the damage to the machine and other consequences caused by non-compliance with above user notice, improper use of the machine, unqualified maintenance personnel, or use of accessories not provided by the company.